

# RADETZKY MARCH

Snare Drum - Bass Drum

Johann Strauss, Op. 282  
Adapted and Arranged by  
ALFRED REED

Moderate March Tempo

012-25 7-00

*Solo* *f*

*f* *p* *mf* *f*

9 21

**Drum I**  
**Timpani**  
Vibrolap

Commissioned by the University of Georgia Bands, John N. Culvahouse, Associate Director

# Galilean Moons

*mf* *ff* *Meno mosso* ( $\downarrow = 02$ ) *Maestoso* *mp* *f* *chk.* *fff* *fff*

Measures 69-78. The score is written in bass clef with various time signatures (5/4, 3/4, 4/4, 3/4, 4/4). It features triplet patterns and dynamic markings ranging from *mf* to *fff*. A bracket labeled "chk." spans the final two measures.

## II. Callisto

*Misterioso* ( $\downarrow = 00$ ) *Bells* (w/thin tgl. beaters) *p* *MALLETS* *Legato* *mf* *Piu mosso* ( $\downarrow = 70$ ) *Xylophone* (Soft Mallets) *mp*

Measures 9-26. The score is written in treble clef with a 4/4 time signature. It includes instructions for Bells and Xylophone. The Xylophone part uses soft mallets and features a *Legato* section starting at measure 17. Dynamic markings include *p* and *mp*.

Symphonic Band Scales

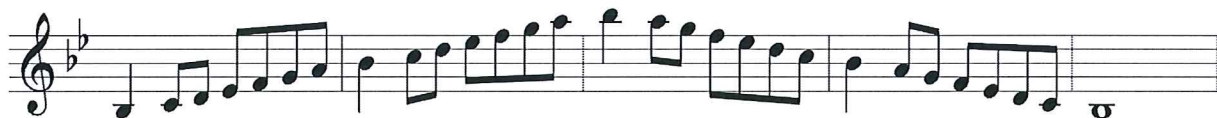
**C Major**  
Concert C



**F Major**  
Concert F



**Bb Major**  
Concert Bb



**Eb Major**  
Concert Eb



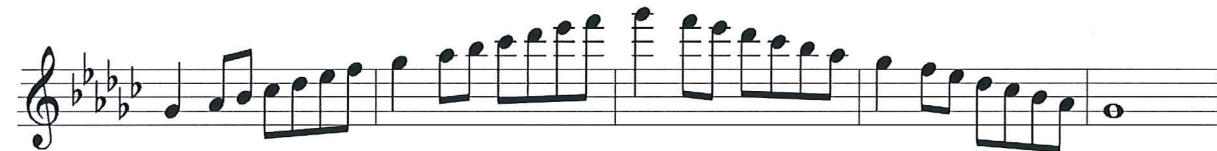
**Ab Major**  
Concert Ab



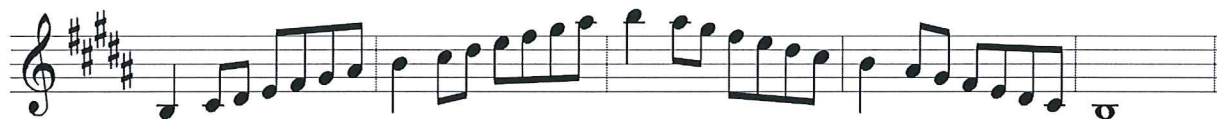
**Db Major**  
Concert Db



**Gb Major**  
Concert Gb



**B Major**  
Concert B



**E Major**  
Concert E



**A Major**  
Concert A



**D Major**  
Concert D



**G Major**  
Concert G

